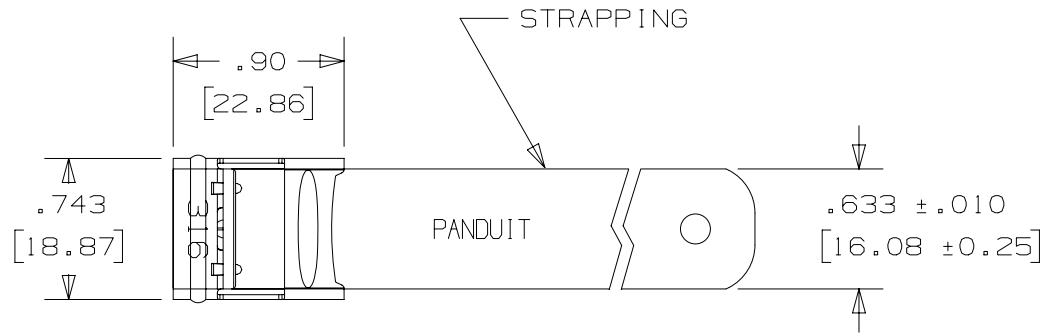
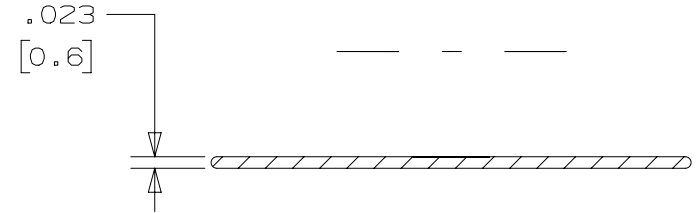


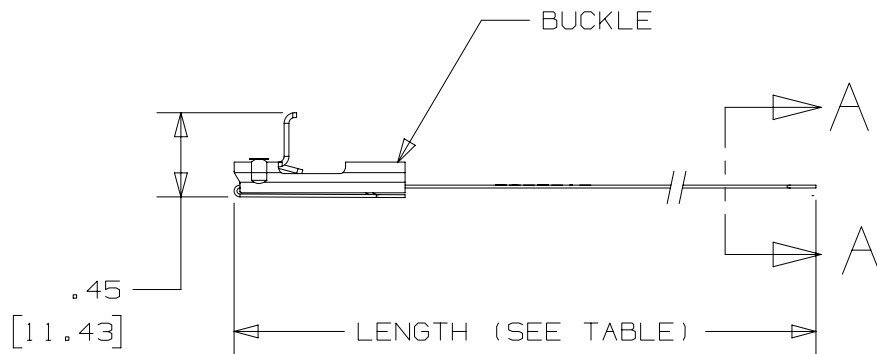
THIS COPY IS PROVIDED ON A RESTRICTED BASIS AND IS NOT TO BE USED IN ANY WAY DETRIMENTAL TO THE INTERESTS OF PANDUIT CORP.



PART NO.	MAX. BUNDLE DIA [ mm ]	LENGTH ±.1 [ 2 ]
MSC4W63T15-L6	4" [ 102 ]	18.0" [ 457 ]
MSC6W63T15-L6	6" [ 152 ]	24.4" [ 620 ]
MSC8W63T15-L6	8" [ 203 ]	30.7" [ 780 ]
MSC10W63T15-L6	10" [ 254 ]	37.0" [ 940 ]



SECTION A - A  
SCALE 4:1

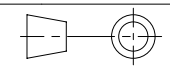


NOTES:

1. APPLICATION TOOLS: BT2HT.
2. ALL DIMENSIONS IN [ ] ARE mm.
3. BASE MATERIAL: 316 STAINLESS STEEL.
4. 100% COATED WITH BLACK NYLON.
5. COATING THICKNESS: .003/.005 [ .076/.127 ] PER SIDE.
6. TOLERANCES (UNLESS OTHERWISE SPECIFIED):  
 .X ± .03 [ .8 ]  
 .XX ± .02 [ .5 ]  
 .XXX ± .007 [ .18 ]

REV	DATE	BY	CHK	APR	DESCRIPTION	ECN
03A	09-05-23	DPOI	JBN	MRWA	NOTE UPDATE. APPLICATION TOOL FROM BT2MS75, BT1HT TO BTH2T.	132977/01
02A	08-03-23	DPOI	JBN	MRWA	CHANGE NOTE 4. REMOVE "OR POLYESTER".	132977/00
01A	04-13-14	JAMB	MIM	RGRO	UPDATE DRAWING TO NEW GLOBAL TITLE BLOCK WITH PANDUIT LOGO.	SSECN01047
00A	10-08-14	JAMB	SKB	---	ORIG CAD FILE SPEC WAS S41169BS_00. NOTE #1: APPLICATION TOOL BT1HT REPLACED BY BT2HT.	----
00	10-03-14	BRH	EJD	JJB	DRAWING RELEASED	11159

PART NUMBER		COATED METAL STRAPPING .625" [15.88] WIDE		
CUSTOMER DRAWING				
ITEM REVISION NAME		N41169BS/03		
DATASET FILE NAME		N41169BS_DC/03A		
MATERIAL		SEE NOTES		
DRAWN BY		DATE	CHK	SCALE
BRH		10-03-14	EJD	1:1
DRAWING NUMBER		N41169BS_DC		
SHEET 1 OF 1		A		



THIRD ANGLE PROJECTION

A-SIZE CUSTOMER